

## ➤ PRODUCT

# WANDER

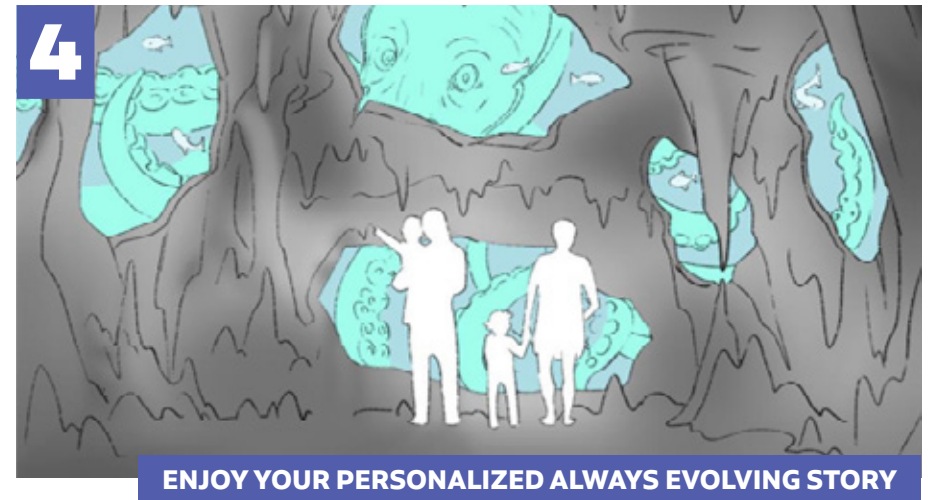
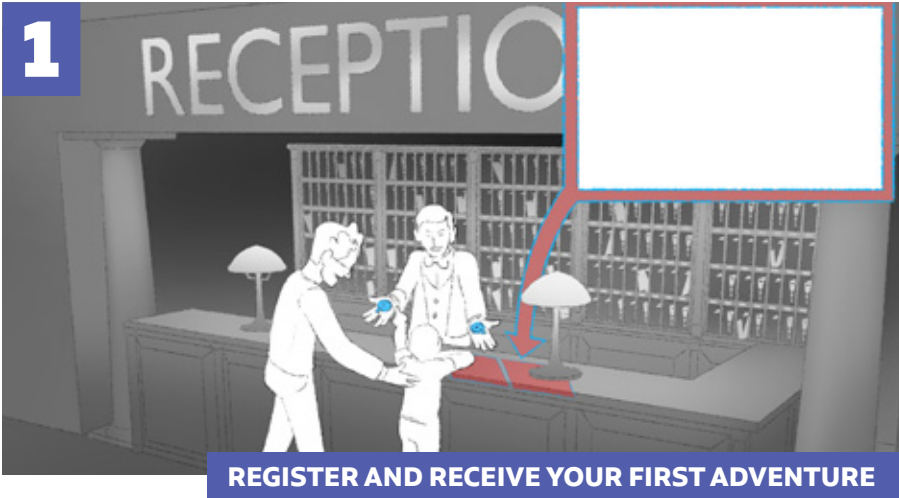
The Wander merges multiple technologies from multiple entertainment venues in order to provide the most immersive experience ever created in theme parks.

**Visitors will now be able to interact everywhere in the venue:** interact with live actors, solve physical puzzles, use our interactive technology to interact with virtual worlds... The visitors actions in the themed venue will change the story of your fantasy world, impact other visitors adventures... In a summary that world really exists and the visitors are part of it!



The absolute  
immersive  
experience  
matching the  
size of your  
themed venue

**alterface** ➤



## UNIQUE ADVANTAGES:

- Personalized stories for each visitor
- Stories continue over multiple days and are designed to encourage visitors to return and extend their stay.
- Interactivity can be installed everywhere even in hotels or shops.
- The Adventures offered to the visitors can manage groups and even require multiple visitors to synchronize their actions for some special Adventures
- The software suite allows the design team to extend the adventures
- The stations can be installed by phase in order to spread the investment
- Possibility to have personalized merchandising linked to the personal stories

## FOR WHO?

- Theme Parks
- Entertainment resorts
- FEC
- Zoos
- Museums & Science Centers

## INCLUDED IN THE PACKAGE:

- Story editing software with intuitive UI for design team
- User database to store the history of the players
- Access to the stories for external software (to offer possibility to plug it on the park phone application)
- Software to activate the stories with every type of physical interactions



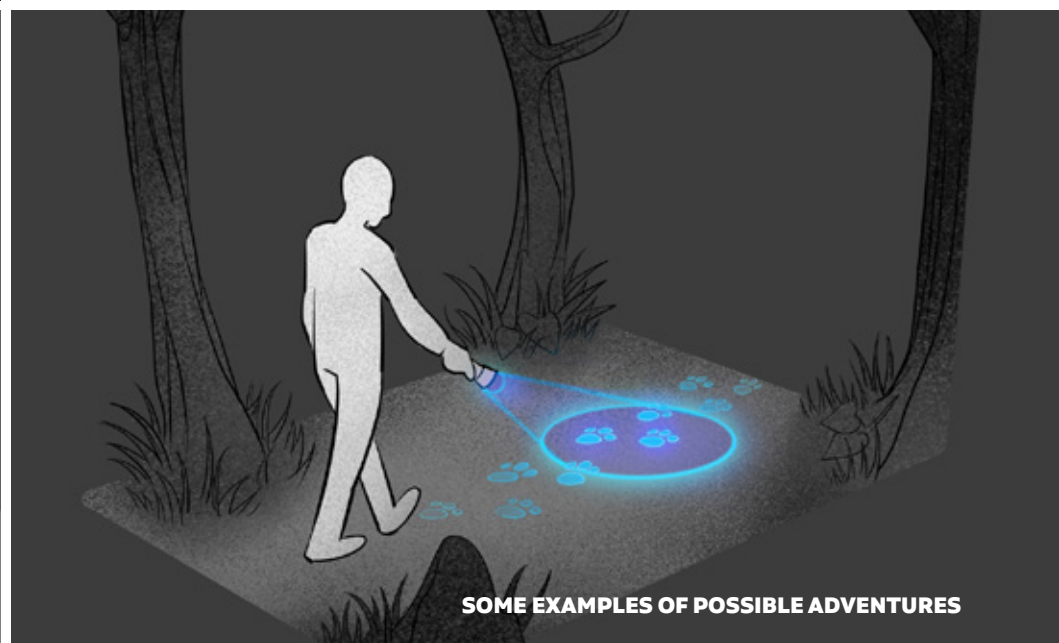
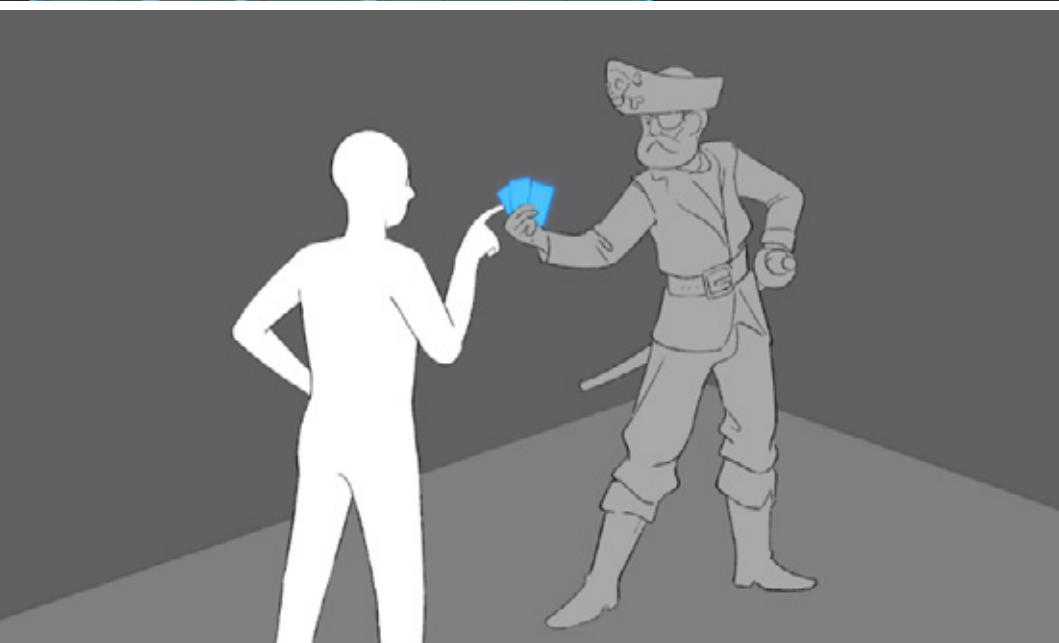
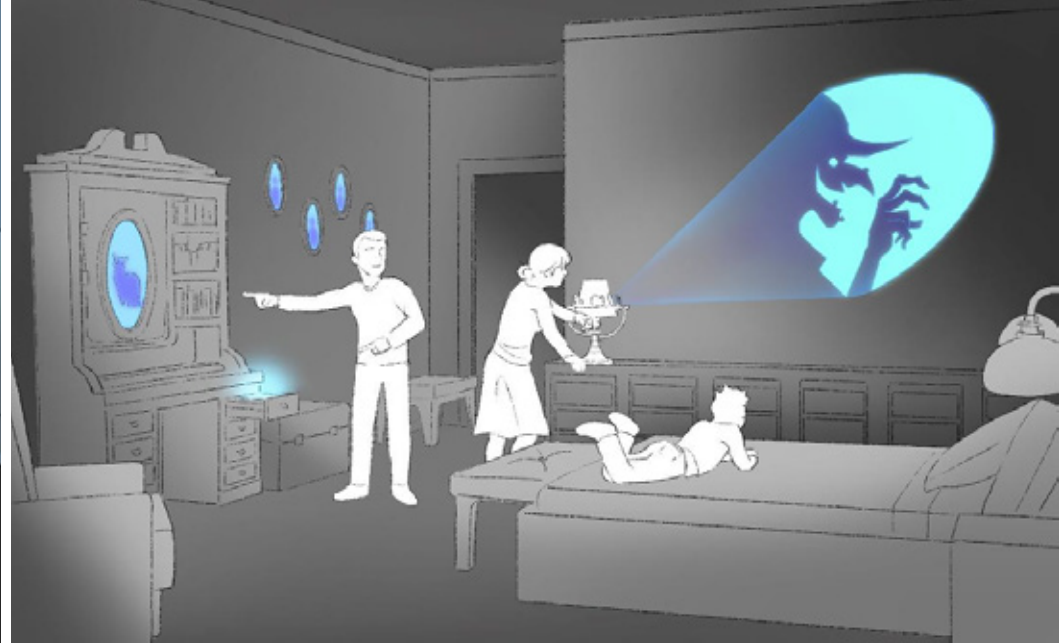
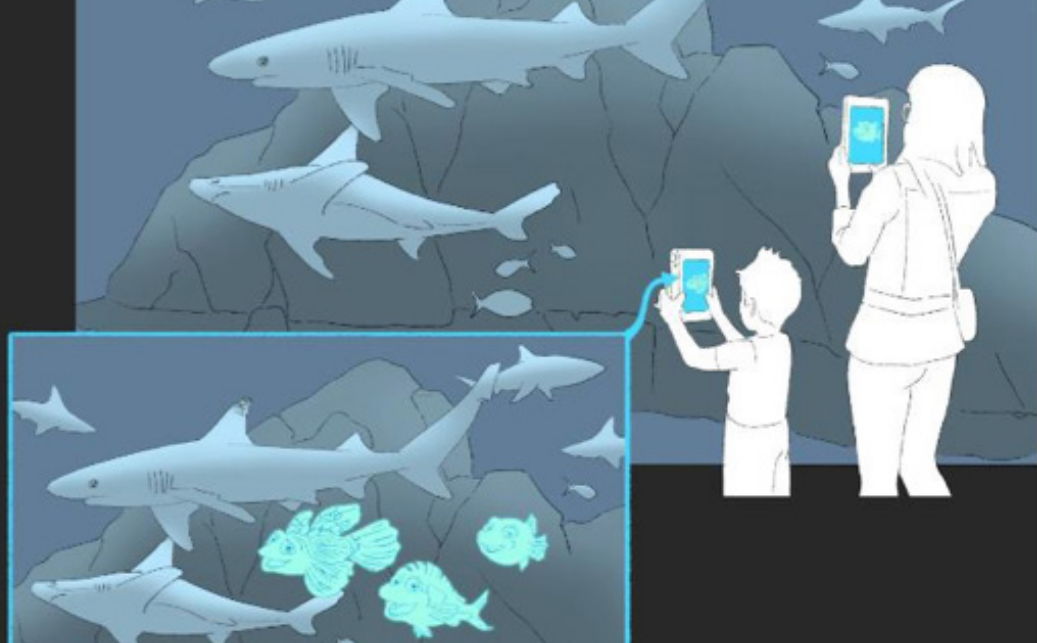
In order to create such an in depth experience, we've created a software suite which contains dedicated tools for every step of the product life:

- > Creative design
- > Technical design
- > Implementation & installation
- > Operation
- > Maintenance and supervision

## ++ AVAILABLE OPTIONS

- Analysis of the venue's assets, identifications of the needs
- Full design from Alterface
- Full technical implementation from Alterface
- Monitoring technology





**SOME EXAMPLES OF POSSIBLE ADVENTURES**



***alterface*** 



[www.alterface.com](http://www.alterface.com)

**Belgium [HQ]**

Avenue Pasteur 11  
B-1300 Wavre

**Singapore**

16 Raffles Quay, #35-01B  
Hong Leong Building, 048581

**Florida**

990 Biscayne Blvd Office 701  
33132 Miami